



product introduction

The SW75B Series features a stainless steel IP68 rated enclosure with sealed bolts and waterproof connector for applications in wash down and corrosive environments. The SW75B comes equipped with NPN and PNP signal input for strobe and offers a 0-10 VDC analog intensity control as well as a manual intensity control potentiometer. Six high current LED's are mounted to an aluminum back plate of which is mounted to the stainless steel enclosure for extra heat dissipation ability.



product features



- Stainless Steel 316 Housing
- Meets FDA Compliancy
- Diffuse Active Area
- Active Area of 66mmX44mm (2.6"x1.8")
- PNP and NPN Strobe Input
- Continuous Operation or Strobe Mode
- Dimmable Via Built In Potentiometer
- Analog Intensity 0-10VDC Signal
- Six, 1mm² Die High Current LEDs



product specifications

Electrical Input	24 VDC +/- 5%
Current	Max. 400mA draw
Wattage	Max. 9.6W
Strobe Input	PNP ► +3VDC or greater to activate. NPN ► GND (<1VDC) to activate
PNP Line	3.7mA @ 3VDC 6.2mA @ 5VDC 12.6mA @ 10VDC 30.4mA @ 24 VDC
NPN Line	22mA @ Common (0VDC)
Continuous Mode	Light will be in continuous mode by leaving signal on strobe input active
Potentiometer	Intensity control of 10% to 100% Clockwise increases intensity
Analog Intensity	The output is adjustable from 10 -100% of brightness by a 0 -10 VDC signal
Connection	5 pin M12 connector
Ambient Temp.	-20° - 50° C (-4° - 122° F)
Lifespan	100,000 hrs
IP Rating	IP68
Compliances	CE and RoHS
Weight	~710g
IEC 62471 Rating	See page 3



product number key

SWB75 – XXX

Product Family:
SWB75
Washdown Brick

Color:
470 – Blue
505 – Cyan
530 – Green
625 – Red
850/940 - IR
WHI - White

—» Part Number Key

* Lights come standard with Narrow lenses

CE and RoHS Compliant



warnings



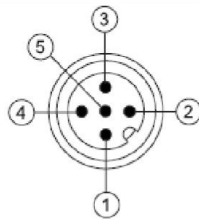
Attention

Please note that the power requirements are up to 400mA at 24VDC. Failure to supply light with up to 400mA can result in non-repeatable lighting. Contact Smart Vision Lights for more information.



wiring configuration

If Analog 0-10 VDC is not used to control light intensity;
+VDC (24VDC) must be connected to Analog Input - Jumper pin 5 to pin 1

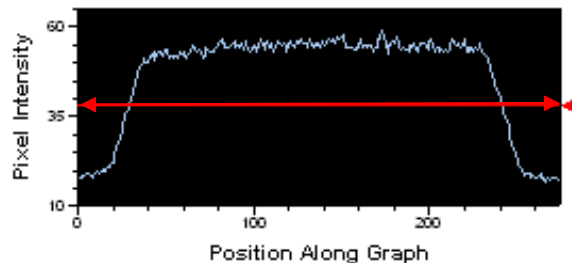
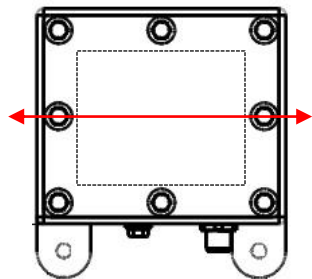


Pin	Function	Signal	Wire Color
1	Power In	+24VDC	BROWN
2	NPN	Sinking Signal	WHITE
3	GND	Ground	BLUE
4	PNP	Sourcing Signal	BLACK
5	Intensity Control	0-10VDC	GREY †

† Some cables use green with yellow stripe for 0-10V adjustment



optical performance



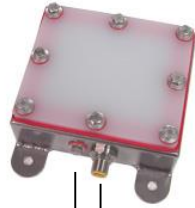
The SWB75 offers a uniform light pattern at any defined working distance. The Pixel Graph representation shows a steep drop off in intensity outside of the projected active area with a very diffuse light pattern inside.

Average Intensity	36000 lux*
-------------------	------------

*Measurement taken on surface of light.



identification & cables



5 Pin M12 Power Input
Manual Intensity Control



Power Cable
Washdown

P/N: **W5PM12-15** – Washdown 15m cable



risk group

According to IEC 62471:2006. Full documentation upon request.

Notice

Exempt Group: No photo biological hazard to eyes or skin even for continuous, unrestricted use.
Applicable for wavelengths: 625, 850, and 940.

Caution

Risk Group 1: Possibly hazardous optical radiation emitted from this product. Do not stare at operating lamp. May be harmful to eye. Safe for most applications except prolonged exposures.
Applicable for wavelengths: 470, 505, 530, and WHI.